

1-888-338-0389
www.centuryservicecorp.com



Exclusively developed by:



Administered by:

CENTURY | **AUTOMOTIVE**
SERVICE CORPORATION
a **MAPFRE** company®

This brochure is not an actual contract but is an outline of coverage available through the program. For complete details concerning terms, conditions, limitations, and exclusions, please refer to your program contract or warranty. Certain coverages may overlap with the manufacturer's warranty, and where they do overlap, the VSA coverage is reduced by the duration or coverage of the warranty. Neither this brochure, nor the corresponding agreement, is an insurance product.

California License No. 0C88598

Copyright © - CENTURY AUTOMOTIVE SERVICE CORP. All rights reserved.
Any unauthorized use will be prosecuted in accordance with the applicable law.

Reorder Code: S_CTWNI_B_1218



TIRE AND WHEEL



PROTECTION FOR
THE ROAD AHEAD

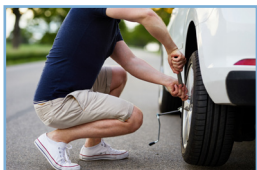
Our Tire & Wheel program offers coverage for the Repair or Replacement of Tires and Wheels when damaged by any Road Hazard¹, as well as cosmetic damage such as nicks, scratches, and discoloration!



**Avoid these costly repairs² with our
Tire & Wheel Program**

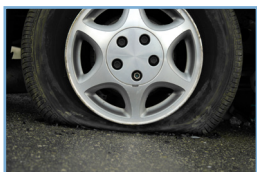


\$280-Tire Replacement



\$650-Wheel Replacement

\$85-Emergency Tow



\$150-Wheel Repair

\$125-Labor & taxes

²Based on current labor/parts costs

TIRE AND WHEEL



Tire and Wheel Coverage

- ✓ **Repair or Replacement of a Tire** covered under the agreement if damaged due to a road hazard¹.
- ✓ **Repair or Replacement of a Wheel** (rim) covered under the agreement if damaged due to a road hazard¹.
- ✓ **Balancing and Mounting** of replacement or repaired tires.
- ✓ **Repair of Wheel scratches, nicks, discoloration or fading.**
- ✓ **Up to \$100 Reimbursement for Towing Assistance** related to a covered repair/replacement.

Coverage for Road hazards such as, but not limited to:

- Nails
- Metal Scraps
- Potholes
- Broken Glass



¹ See your Agreement for complete description of benefits & exclusions